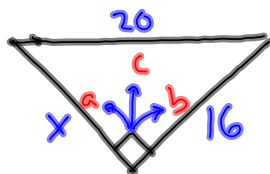


STEPS

- ① Label
- ② Formula
- ③ Plug-in values & solve.
- ④ Take the $\sqrt{\quad}$ at the end.

$$\begin{aligned}
 a^2 + b^2 &= c^2 \\
 6^2 + 8^2 &= c^2 \\
 36 + 64 &= c^2 \\
 100 &= c^2
 \end{aligned}$$

$$\begin{aligned}
 \sqrt{100} &= \sqrt{c^2} \\
 10 &= c
 \end{aligned}$$



① label

②

$$a^2 + b^2 = c^2 \text{ formula.}$$

③ plug in and solve.

$$a^2 + 16^2 = 20^2$$

$$\begin{array}{r}
 a^2 + 256 = 400 \\
 - 256 \quad - 256 \\
 \hline
 \end{array}$$

$$\sqrt{a^2} = \sqrt{144}$$

④ Take the $\sqrt{\quad}$

$$a = 12$$

CHALLENGE:

How FAR
FROM G to H?

